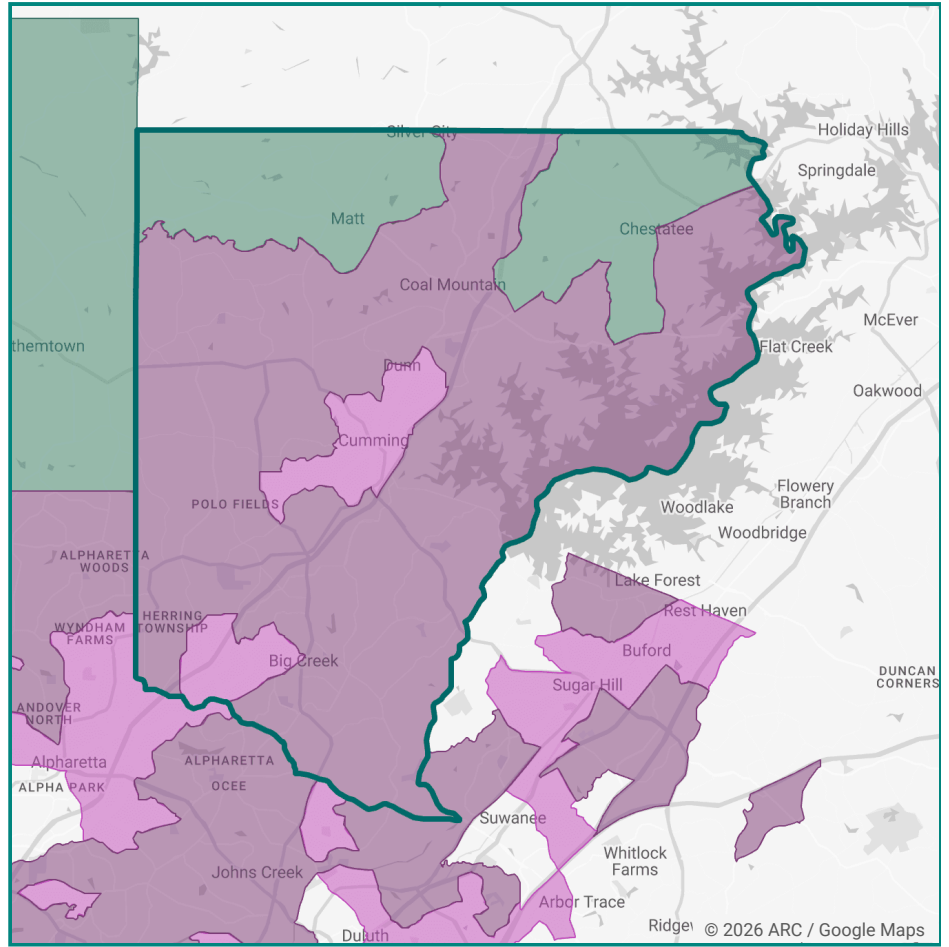


- 73% SUBMARKET 6: HIGHER-PRICED SUBURBAN NEIGHBORHOODS**
- 21% SUBMARKET 10: HIGHER-PRICED RURAL**
- 6% SUBMARKET 5: HIGHER-PRICED SUBURBAN EMPLOYMENT CORRIDORS & TOWN CENTERS**

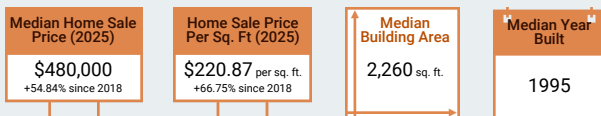


## TOP SUBMARKET(S) BY PERCENTAGE

### Submarket 6: Higher-Priced Suburban Neighborhoods

Moderate-to-higher-priced suburban neighborhoods consisting almost entirely of single family homes.

- Low proportion of residents in poverty (along with 1 & 5)
- Mostly owners
- Mostly SF housing units
- Low proportion of cost-burdened owners (along with 5)



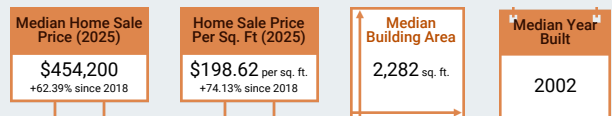
Data source: ARC analysis of ATTOM Data Solutions' home sale transactions, 2020-2025. Explore this data further in the

[DATA EXPLORER](#)

### Submarket 10: Higher-Priced Rural

Rural areas with generally newer, higher-priced, large owner-occupied single-family homes on large lots.

- Highest proportion of 65+ residents
- Smallest proportion of renters
- Smallest proportion of MF housing units



Data source: ARC analysis of ATTOM Data Solutions' home sale transactions, 2020-2025. Explore this data further in the

[DATA EXPLORER](#)

## TOP ACTION STEPS

### Increase Supply

- Allow and incentivize innovative housing types
- Support smaller homes and ownership opportunities

### Expand Capital Resources

- Establish local housing funding resources and programs
- Identify regional funding mechanisms

### Develop Leadership & Collaboration on Affordability

- Identify housing needs through planning
- Support local leaders through regional programs

### Preserve Affordable Supply

- Connect property owners with resources
- Inventory affordable housing stock

### Promote Housing Stability

- Connect to resources and establish partnerships
- Identify and educate on housing instability

### Reduce Housing & Transportation Costs

- Increase walkability
- Reduce costs of housing near transit and amenities

## COUNTY SNAPSHOT

Median Home Sale Price (2025)	\$575,000
Change in Median Home Sale Price (2020-25)	+56%
Home Sale Price Per Sq Ft (2025)	\$242.00 sq ft
Percent Change in Home Sale Price Per Sq Ft (2020-25)	+65%
Median Building Area of Home Sales (2025)	2,502 sq ft

Data source: ARC analysis of ATTOM Data Solutions' home sale transactions, 2020-2025. Explore this data further in the [DATA EXPLORER](#)

## LEARN MORE

- [Explore Forsyth County on the Metro Atlanta Housing Toolkit website](https://metroatlhousing.org/counties/forsyth/) (https://metroatlhousing.org/counties/forsyth/)
- [Explore Housing Strategy Resource](https://metroatlhousing.org/resources) (https://metroatlhousing.org/resources)
- [Explore ARC Housing Success Stories](https://atlantaregional.org/what-we-do/housing) (https://atlantaregional.org/what-we-do/housing)